

1-1. iBlow10

1. Product Introduction

↓
Product concept
↓

The first product with “iBlow” Brand name

iBlow 10



1. Product Introduction

Product concept

Appearance

Front View

Rear View



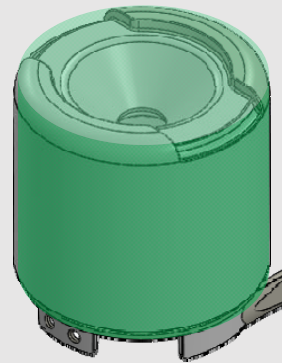
1-1. iBlow10

1. Product Introduction

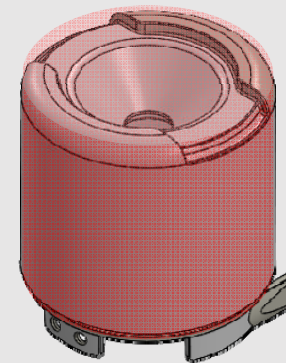
↓
↓
Summary



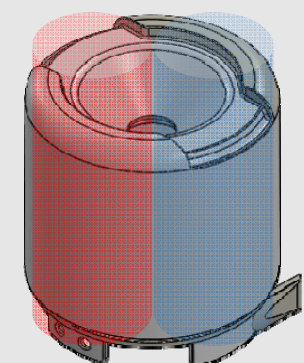
LED Alert



Pass



Low

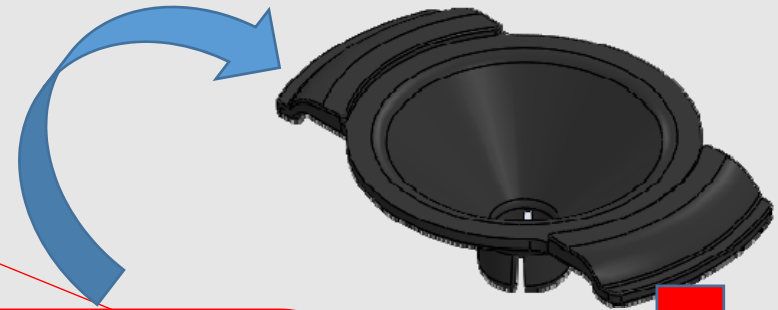


High

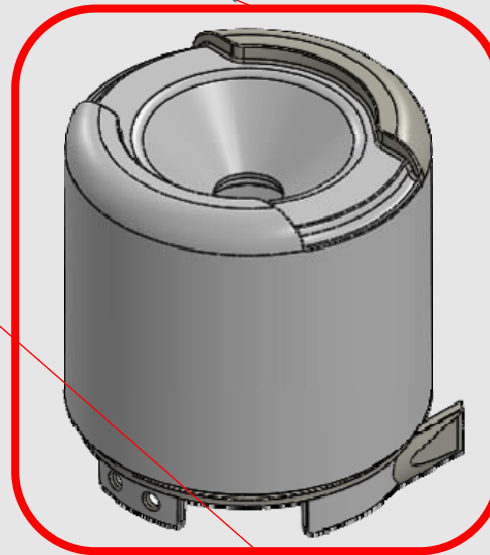
1. Product Introduction

↓
↓
Summary

Disposable Blow cap



Blow Cap



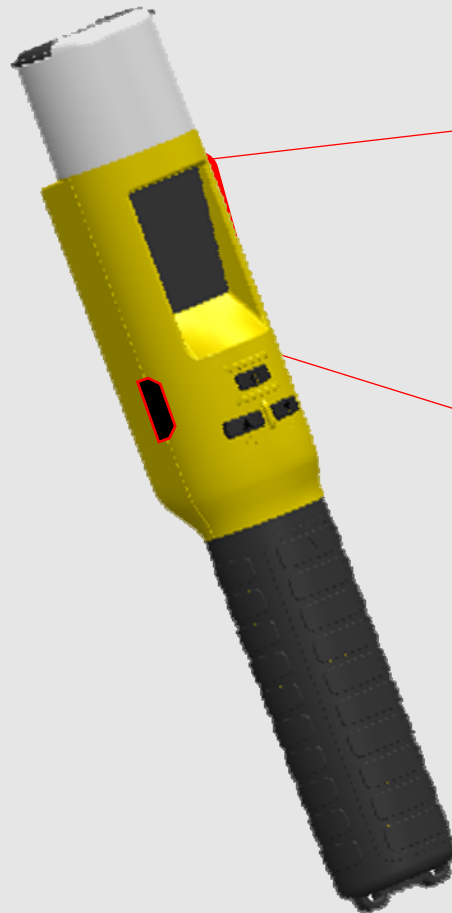
Lighting Cap



1. Product Introduction



Summary



Display Panel



FND display

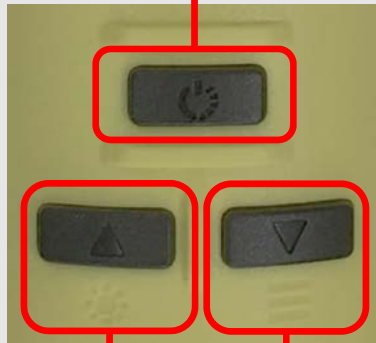
0.00/Lo/Hi or Numeric data




1. Product Introduction



Summary





Button orders



-  Power On/Off
-  Enter the menu
-  Select the function

-  Move up
-  Light mode

-  Move down
-  Menu mode

1-1. iBlow10

1. Product Introduction

Summary



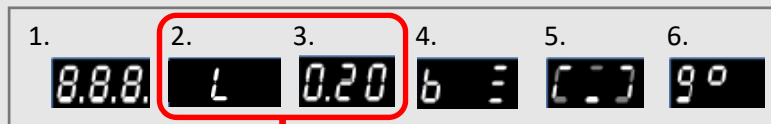
Power on sequence

1. Keep push the power button and release when response.



1. Power on → 2. Battery level → 3. Initializing →
4. Ready to blow

2. Keep push the power button and just keep push it.



Repeat until release the button

1. Power on → 2. Display "L" → 3. Display latest test data
4. Battery level → 5. Initializing → 6. Ready to blow
7. Analyzing → 8. Test result

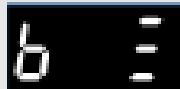
1-1. iBlow10

1. Product Introduction

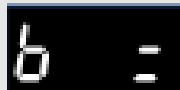
↓
↓
Summary

Battery Levels

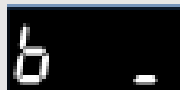
High



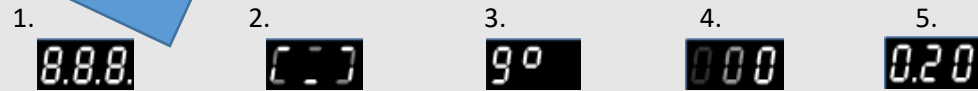
Middle



Low



Instruction for use



1. Power on : That will be indicate “000” and go to next
2. Initializing Stabilization : Sensor is ready to test
3. Ready to blow : Display “go”
4. Analyzing breath alcohol sample: analyzing fast
5. Display the test result : Showing test result
6. Light Mode : LED color change

1. Product Introduction

↓
↓
Summary



Adjustable functions

0. Latest test result

0.L r

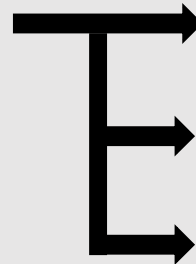


0.20

Latest result

1. Number of the Test

1.C t



C.1

The latest 12 hours

C.2

After calibration

C.3

Total numbers

1. Product Introduction

↓
↓
Summary

Adjustable functions

2. Numeric display mode



2.DP

dP.1

0, Lo, Hi

dP.2

Approximate value

Alcohol levels



0

Lo

Hi

Approximate Value

0.20

0.0.0.

1-1. iBlow10

Adjustable functions

1. Product Introduction

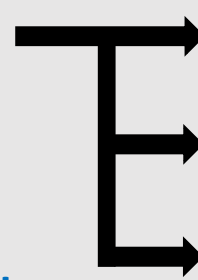
Summary



3. LED display mode



3.L.E



L.E.1

LED off

L.E.2

Only test result

L.E.3

Stand by, Test result

Stand by to blow

L.E.1

Off



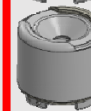
Test result

Off

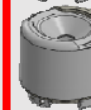
Pass



Low

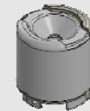


High

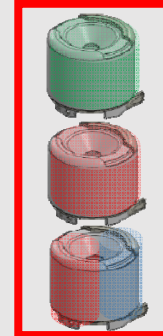


L.E.2

Off



On

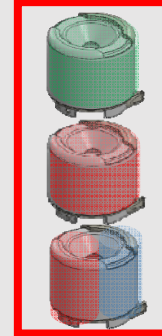


L.E.3

On



On



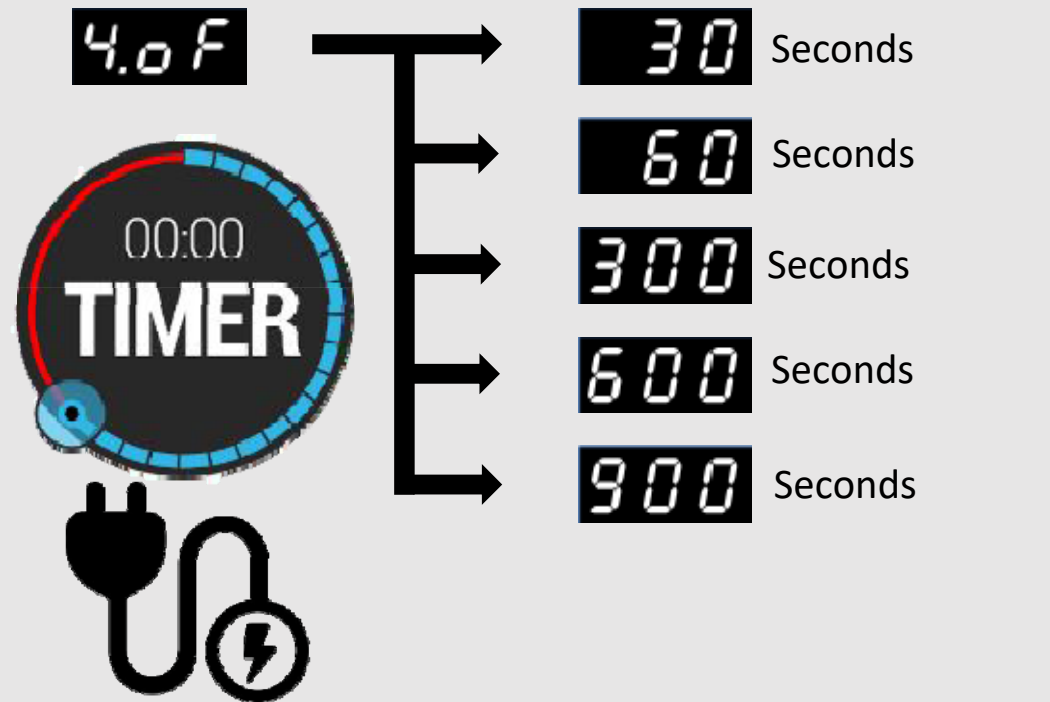
1. Product Introduction

↓
↓
Summary



Adjustable functions

4. Auto power off



1. Product Introduction

↓
↓
Summary



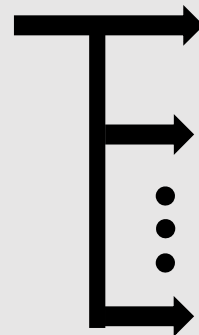
Adjustable functions

5. Duration time for display

5.5t



8.8.8.



1 Seconds

2 Seconds

⋮

9 Seconds

1. Product Introduction

Summary



Adjustable functions

6. Day and times to remain calibration

Days to remain

6.Cd

Cd.d

365 Days

Grace period



CA.d

30 Days

Number of remain

Cd.t

5,000 Times

Grace period



CA.t

1,000 Times

After grace period

Will not work!

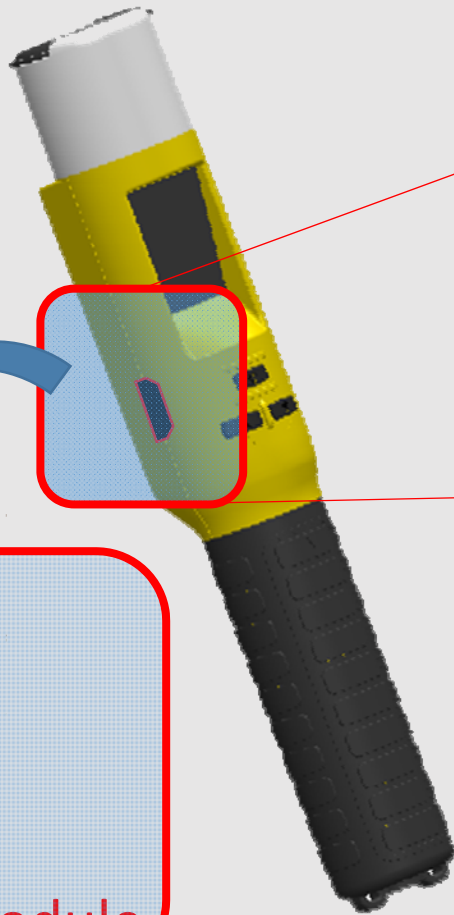
CAL



1. Product Introduction

Summary

Connectable to PC



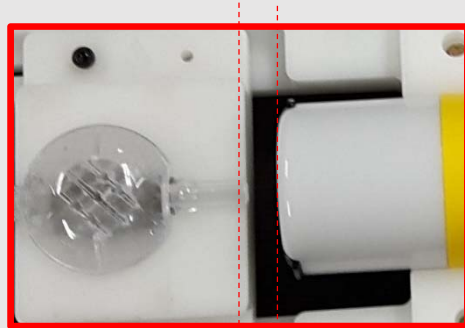
1. Access the information. (MAX30)
2. Adjustable functions. (Customizing S/W)
3. Calibration protection through PC software(Optional)

Calibration Module

1. Product Introduction

↓
↓
Summary

Calibration



10mm